

Wing Nut

Thread Type: UNC / BSW - Coarse

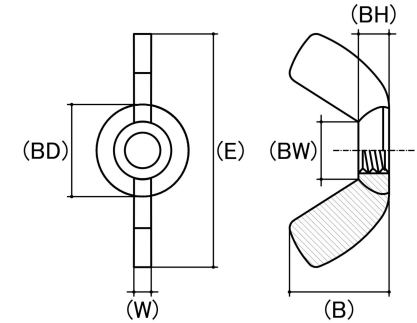
Thread Direction: Right Hand

Material: Solid Brass

Class Grade: Low Tensile Grade 2

Corrosion Protection Level: Ultimate

Standard: UNI 5448



*CAD drawings shown for graphic representation only.**

Size	Thread Pitch (TPI)	Thread Type	Overall Nut Height (B) (mm)		Nut Width (A) (mm)		Boss Diameter (BD) (mm)		Wing Span Range (E) (mm)		Wing Thickness (W) (mm)		Boss Height (BH) (mm)		Between Wings (BW) (mm)		sku (qfind)
			Min	Max	Min	Max	Min	Max	Min	Max	Min	Max	Min	Max	Min	Max	
1/8"	40	Coarse	9.10	9.60	-	-	8.60	10.00	21.00	23.00	2.50	3.10	4.00	4.20	6.85	7.15	41WBW18
5/32"	32	Coarse	9.10	11.00	-	-	8.60	10.00	21.00	23.00	2.50	3.10	4.00	4.20	6.85	7.15	41WBW532
3/16" (#10-24)	24	Coarse	9.10	11.00	10.00	11.00	8.60	10.00	21.00	23.00	2.50	3.10	3.70	4.00	6.85	7.15	41WBW316
1/4"	20	Coarse	11.50	13.50	-	-	11.40	12.70	26.00	29.00	2.80	3.10	4.65	4.95	9.10	9.40	41WBW14
5/16"	18	Coarse	14.00	15.00	-	-	12.90	13.90	29.00	32.00	3.20	3.50	5.10	5.50	9.40	10.00	41WBW516
3/8"	16	Coarse	16.30	17.50	-	-	16.00	17.00	33.00	37.00	4.00	4.40	5.65	6.00	10.50	11.90	41WBW38
1/2"	12	Coarse	22.00	25.00	-	-	19.50	21.00	45.00	48.00	4.70	5.30	7.80	8.30	13.80	15.10	41WBW12

Disclaimer:

Dimensional data and technical information was obtained from publically available sources and not acquired through standard agencies. It has been completed and compiled for reference purposes only; where discrepancies are found they are subject to change without notice. Bolt & Nut Australia makes no warranties or representations regarding the accuracy and validity of the compiled information and data. Contact the relevant standard authorities for accurate and detailed information.

* CAD drawings may not reflect diameter, thread length or overall length.

© Bolt & Nut Australia Pty Ltd. All rights reserved.

Version: 18 Mar 2024